



1

Find the egg, let the hunt begin.
Where bubbles fly and clothes spin
The bunny went where socks get clean,
Easter treats in the washing machine!



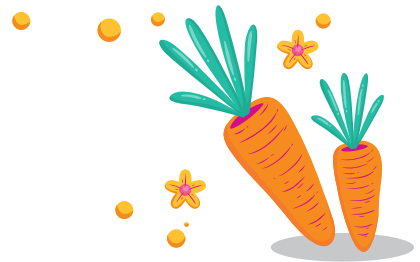
2

You'll find your next clue where you fall asleep,
Snuggled up nicely, counting sheep,
Beneath the covers, where you rest your head,
An easter egg tucked in your bed!



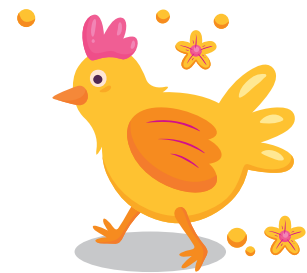
3

Filthy, stinky, in you go,
Where do bubbles soak you head to toe?
Following the easter bunny's path,
A hidden egg, right in your bath!



4

In the dining space where we gather around,
The easter bunny left a treat to be found.
On the table where plates are set,
An easter surprise you won't forget.



5

Yummy smells, tasty treats,
Where do we go to make things to eat,
Open the fridge and you will see,
An easter egg for you and me.





6

Look on the sofa where you take a rest,
A hidden egg, from your easter quest!
in the cushions, where you sit and play,
the easter bunny left a treat, hooray!



7

Another clue, for your easter treat,
Where do shoes go when they're not on your feet?
Take a look where footwear goes.
A hidden egg, right at your toes!



8

Easter's here, lets celebrate,
Take a trip to the Garden gate,
The Easter bunny left a treat - not far!
Where do you sit when you're in the car?



9

Knock-Knock someone's here,
Go to the place where letters appear,
Waiting for you by the front door,
Is your final clue, only one more,



10

Where the vacuum sits, take a peek,
An Easter treat for you to seek.
Sucking up dirt and crumbs- so fun!
Find the egg, and your hunt is done!



Parents instructions

Put Clue 2 in the washing machine. Put Clue 3 in their bed. Put Clue 4 in the bathroom. Put Clue 5 on the table.
Put Clue 6 in the kitchen. Put Clue 7 on the sofa. Put Clue 8 with the shoes. Put Clue 9 in their car seat.
Put Clue 10 by the front door. Leave easter treats in each space with clues. Place final treat by the vacuum cleaner.

Hand them clue 1 and begin.

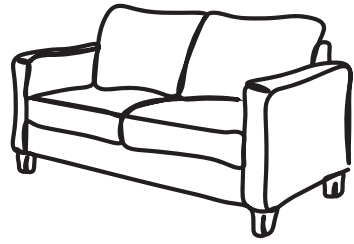
live playfully



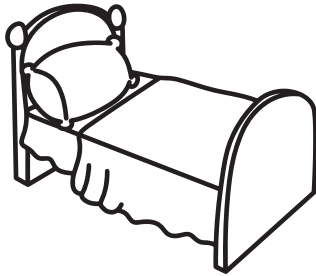
1



6



2



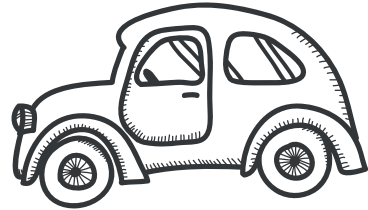
7



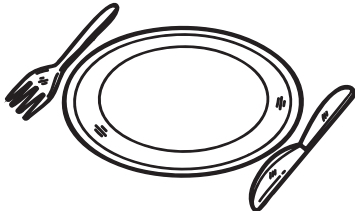
3



8



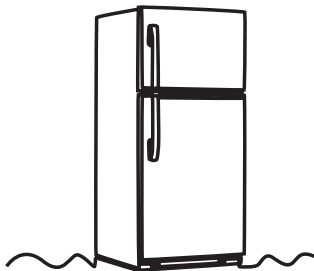
4



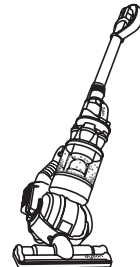
9



5



10



Parents instructions

The clues above are designed to keep younger children involved in the easter fun! Please cut out and follow the instructions below:

Put Clue 2 in the washing machine. Put Clue 3 in their bed. Put Clue 4 in the bathroom. Put Clue 5 on the table. Put Clue 6 in the kitchen. Put Clue 7 on the sofa. Put Clue 8 with the shoes. Put Clue 9 in their car seat. Put Clue 10 by the front door. Leave easter treats in each space with clues. Place final treat by the vacuum cleaner.

Hand them clue 1 and begin.

live playfully